



# Wollondilly Arts Group Inc

## 'Series of affordable art-based workshops' 2017

**Solar/Polymer Plate Printing Workshop**  
**with Elizabeth Atkin**  
**Sat 7th/Sun 8th October 2017 10am to 4pm**



Solar/Polymer Plate Print by Elizabeth Atkin

### What you will learn:

Participants will learn this wonderful non toxic printmaking technique using sunlight on light-sensitive plates. Images will be created by the students on transparent film. This lends itself to skills in drawing or photographic subjects. The images are set on the plate by washing off the exposed polymer in warm water, then re-exposing the plate to the sun. Plates are inked up and printed on an etching press. A variety of colours and methods can produce a layered print. Everyone will be able to do several prints from one or 2 plates.

More advanced participants will use an additional polycarbonate plate with Drypoint method and/or Collagraph to enhance their prints.

**Outcomes** - participants will learn a non toxic / no acid print technique. They will also learn to combine other media to enhance their printmaking. Participants will have a small portfolio of unique prints to take home. Studio, gallery and teaching facility set in a beautiful bush land setting.

**DATE:** Sat 7th/Sun 8th October 2017, ARRIVAL /SET-UP 9.30 am to START 10.00 am to 4 pm

**WHERE:** White Waratah Workshops, 7 River Street, Balmoral Village, NSW, 2571

**COST:** \$60 members, \$ 75 non members - Materials included.

An additional Photo polymer plate and/or paper may be available for purchase at cost price

See Material list last page



Wollondilly Arts Group is supported  
by Southern Tableland Arts



Wollondilly Arts Group is very grateful to the Wollondilly Shire Council for their grant that enabled us to offer a 'Series of affordable art-based workshops' using non-toxic materials and processes.

## The Tutor – Elizabeth Atkin:

Elizabeth's 'White Waratah Workshops' in Balmoral, Southern Highlands, is a purpose built space with a Gallery, workshops and teaching studios, where she offers introductory weekend workshops in printmaking and bookbinding. She has participated in the Open Studio Art Trail as part of the Southern Highlands Arts Festival for the past 7 years, has taught Bookbinding at the 'Guild of Craft Bookbinders' and 'Introductory Printmaking' at the Royal Art Society.

Her artistic 'education' consists mostly of evening classes, concentrated short workshops and courses as well as residential Printmaking in Venice and Greece with certificates of attainment adding up to a partially completed Diploma in Fine Arts. She also has qualifications in Bookbinding through Ultimo TAFE.

Elizabeth's most significant achievements have been winning the print section of the North Sydney Art Prize, binding a selection of the Blake Poetry prize which then toured Australia and binding 2 books which toured with Bookbinding Exhibitions Australia to Paris, Japan and Australia. Her prints are represented in private collections in Ireland, UK and France.



Her current printmaking is predominantly Collagraphs and Drypoints utilising colour through watercolour washes as well as Solar/Polymer plate prints with multiple elements producing unique prints.

## BOOKINGS and PAYMENTS:

- **Phone or email Roswitha Giersch** to check availability and reserve your place  
PH: 4681 0535 or Email: [roswitha01@gmail.com](mailto:roswitha01@gmail.com)
- Payments to be made via Direct Deposit **or** Bank Transfer **or** cheque

### Bank Details:

Macarthur Credit Union, BSB 802 388,  
Account No. 62408,  
Account Name: Wollondilly Arts Group

### Transaction Info:

for Solar Plate Printing W/S:

WS 1 + your name

- Forward booking form with full payment (cheque made out to Wollondilly Arts Group) **or** transaction details **or** copy of receipt within 5 days of reserving your place to Wollondilly Arts Group, PO Box 799 Picton 2571  
or Email: [roswitha01@gmail.com](mailto:roswitha01@gmail.com)

## CANCELLATIONS:

- If you have paid and are then unable to attend – full payment will be refunded up to 7 days prior to the workshop.
- Cancellations after 7 days prior to the workshop will only be refunded if the place is subsequently filled.
- Bookings are transferable between WAG members. However, if a place is transferred to a Non-member, they will be required to pay the difference to make up the applicable Non-members cost. Please notify Roswitha Giersch of any transfers to avoid confusion.



Wollondilly Arts Group is supported  
by Southern Tableland Arts



Wollondilly Arts Group is very grateful to the Wollondilly Shire Council for their grant that enabled us to offer a 'Series of affordable art-based workshops' using non-toxic materials and processes.



# Wollondilly Arts Group Inc

## 'Series of affordable art-based workshops' 2017

### - Booking Form -

Please send completed form with a cheque or Direct Deposit/Bank Transfer receipt for full amount to:

Wollondilly Arts Group  
c/o The Secretary  
PO Box 799  
Picton, NSW 2571

**Or** for Direct Deposit or Bank Transfer only:

scan your payment receipt/transaction details and email form to [roswitha01@gmail.com](mailto:roswitha01@gmail.com)

Name:

Address:

Email:

Phone:

Mobile:

- WORKSHOP 1: Solar/Polymer Printing with Elizabeth Atkin \$  
Sat 7th/Sun 8th October 2017, \$60 members, \$75 non members  
WAG member - Yes / No

**Total Payment:** \$ \_\_\_\_\_

**Payment by**  - Cheque;  - Direct Deposit;  - Bank Transfer

**Cheque:** payable to Wollondilly Arts Group

**Direct Deposit/Bank Transfer:**

Account Name: Wollondilly Arts Group

Macarthur Credit Union, BSB 802 388, Account No. 62408,

Transaction Info:

for Solar/Polymer Printing W/S:

WS 1 + your name

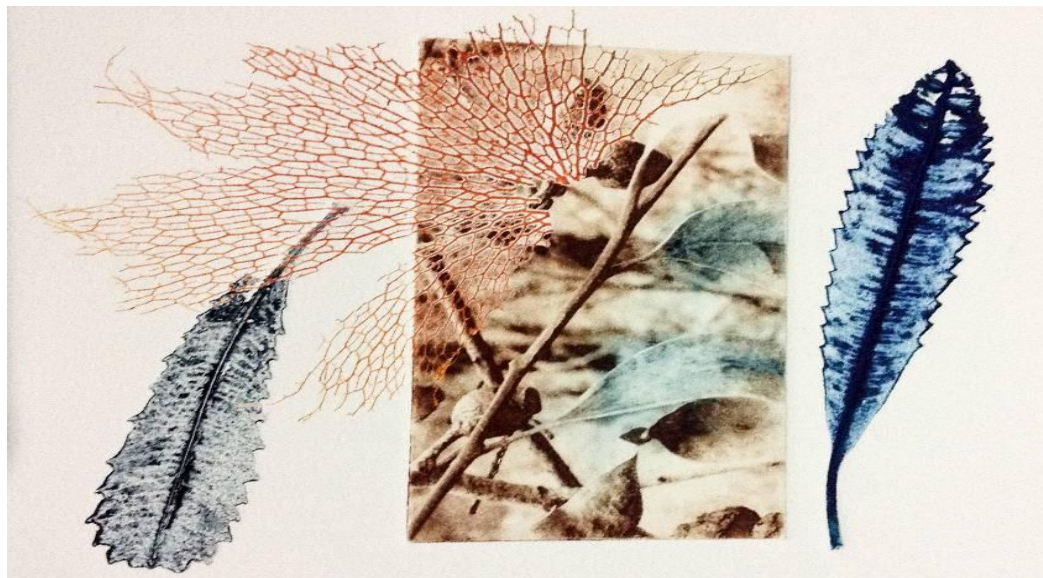


Wollondilly Arts Group is supported  
by Southern Tableland Arts



Wollondilly Arts Group is very grateful to the Wollondilly Shire Council for their grant that enabled us to offer a 'Series of affordable art-based workshops' using non-toxic materials and processes.

## MATERIAL LIST FOR ELIZABETH ATKIN WORKSHOP



### You will need to bring:

- ❖ Design ideas - Sketches or images in your preferred size (A5, A6), e.g. line drawing
- ❖ Photographs with good contrast and tonal passages on copied onto transparencies in your preferred size (A5, A6), e.g. overhead projector film
- ❖ Double matte tracing paper (thick), if you have
- ❖ Protective clothing: apron, gloves and closed shoes essential
- ❖ clean up rags (old t-shirts great)
- ❖ folder and paper to take prints home (e.g. kid's scrapbook)
- ❖ favourite Japanese papers for printing Chine-collé \*, if you wish
- ❖ own printing inks if you have favourite colours, must be oil based
- ❖ materials like leaf skeletons, lace etc., that will let some light pass, textured items/fabrics that can be used to make a textured plate
- ❖ bring your own polycarbonate drypoint plates, if you have them

### Materials provided:

- ❖ Paper: 2 sheets of Hahnemuehle printing paper, 53cmx78cm, (230gsm, warm white)
- ❖ Mulberry paper and tissue paper for Chine-collé \*
- ❖ 2 A5 Photo polymer plates - can be cut to A6 sizes plus test strips
- ❖ Tracing paper
- ❖ Basic printing ink
- ❖ Mat board and some Collagraph material
- ❖ 1 Drypoint plate
- ❖ Use of a student equipment box including tools required for workshop
- ❖ Solar exposure frames
- ❖ Participants will get a comprehensive set of notes to take home.

Additional plates and paper available at cost price.

\* **Chine-collé** - technique in printmaking, in which the image is printed on a very light weight paper that is bonded to a heavier printing paper during the printing process.

\*\*\*\*\*PLEASE BRING LUNCH TO SHARE - MORNING TEA WILL BE SUPPLIED \*\*\*\*\*



Wollondilly Arts Group is supported  
by Southern Tableland Arts



Wollondilly Arts Group is very grateful to the Wollondilly Shire Council for their grant that enabled us to offer a 'Series of affordable art-based workshops' using non-toxic materials and processes.